


War in the Pacific...

• Pearl Harbour → Midway Notes

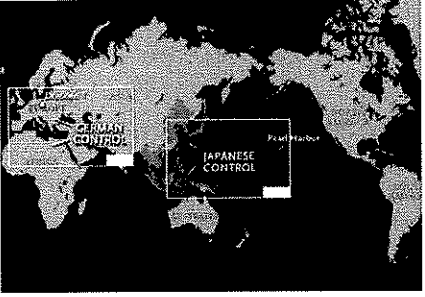
2/27/2019
SS II Exp.
C. Carey



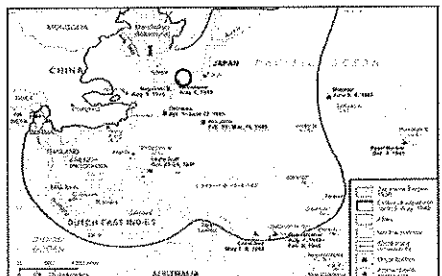
The Pacific Theatre
WWII

What do We Mean by "Pacific Theater?"

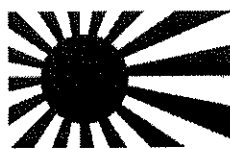
- Japan & Asia
- Wars fought in the Pacific Ocean region



Event 1: 1931-1937 • Japan invades Manchuria (1931) and China (1937)

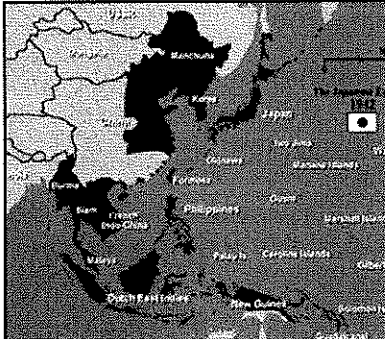


Expansion of the Japanese Empire

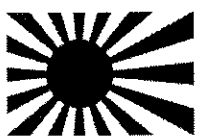

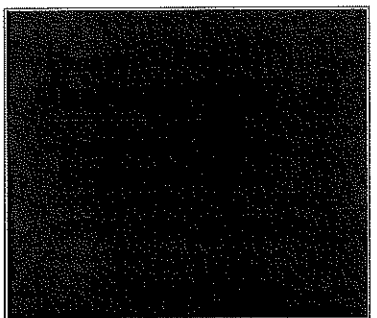


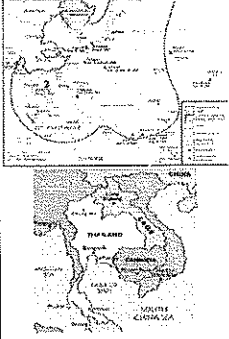
- Japan felt cheated by Britain, France, and the US after WWI because it failed to gain much territory
- The Japanese government falls under control of radical nationalists and allies with the army
- Japan begins to expand its empire by invading Manchuria in 1931
- Japan later invades the rest of China in 1937
- "Asia for the Asiatics"

Why Does Japan Expand?



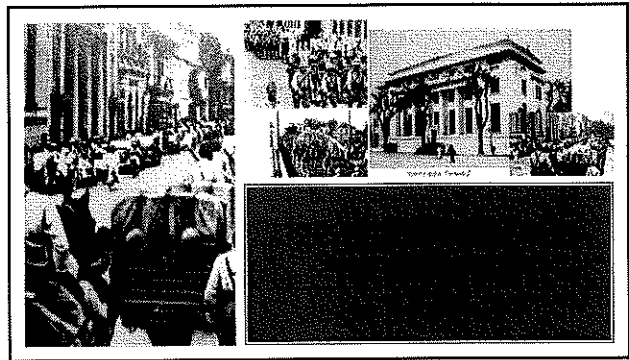
- Japan was a superior nation and greater nations conquer weaker ones (like Germany & Italy in Europe)
- Land for Japan's growing population
- Access to natural resources for Japan's military expansion
- Access to new markets to sell surplus goods



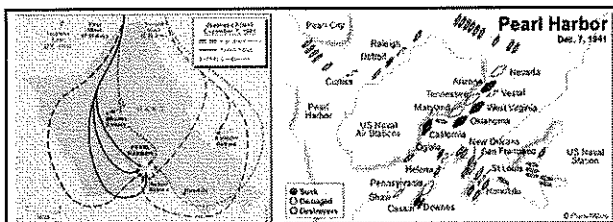
Event 2: Summer 1941

- Japan takes French Indochina (Vietnam, Cambodia, and Laos)
- Germany invades USSR in 1941

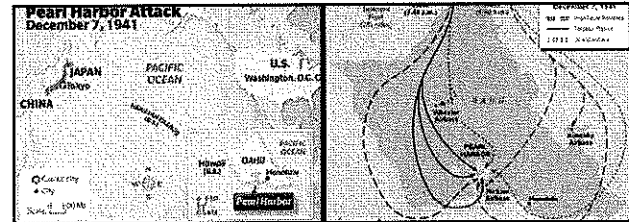


Event 2: Significance/Result

- Japan invades Indochina because of a need for natural resources
- The Americans respond by cutting off oil shipments to Japan
- This only makes Japan more aggressive for additional territory



Japan reacts to US Economic Sanctions
Attacks USA at Pearl Harbour



The Attack Plan Targeted Air Bases and the Naval Base, not the Cities

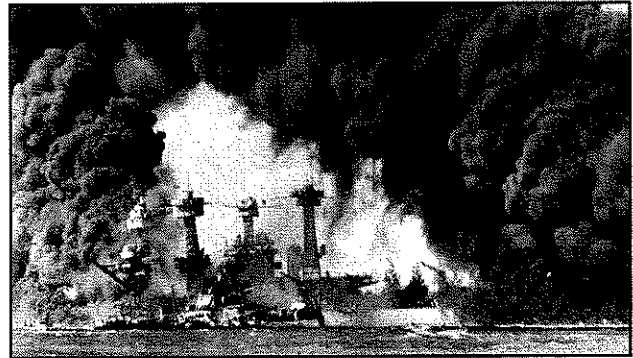
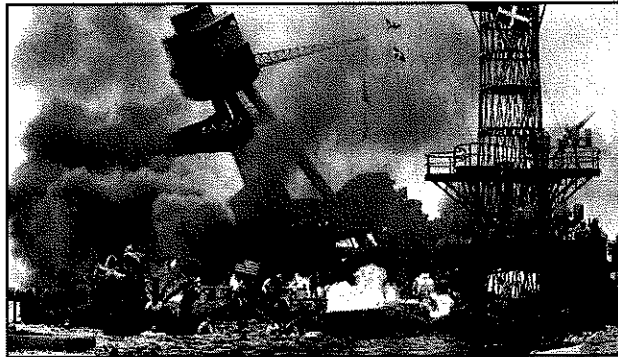


The USS Shaw Explodes

Over 2,400 Americans were killed and over 1,200 more were injured



The USS Arizona Sinks

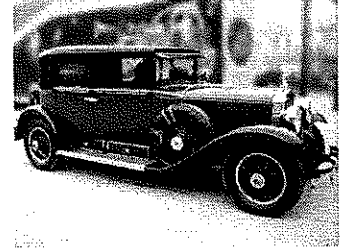


"A Day That Will Live in Infamy"
USA President FDR Declares War



FDR's Ride to Give His Speech
(Courtesy of Al Capone)

• Limited by a government regulation that prohibited spending only \$750 for a car, *the only bulletproof car* they could find was previously Al Capone's but was taken because of tax evasion.



Honolulu Star-Bulletin EXTRA

WAR!

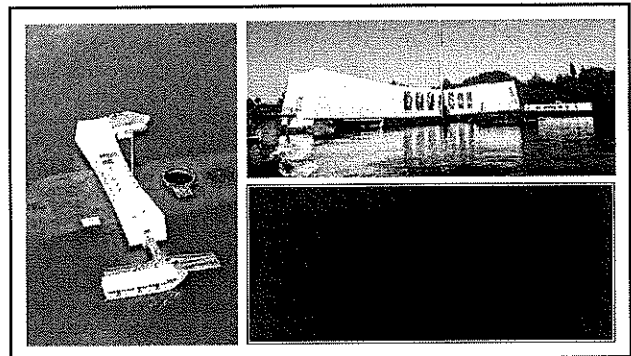
OAHU BOMBED BY JAPANESE PLANES

THE BOMBING BEGAN AT 7:55 AM AT PEARL HARBOR, OAHU, HAWAII, AT 7:55 AM. THE BOMBING BEGAN AT 7:55 AM AT PEARL HARBOR, OAHU, HAWAII, AT 7:55 AM.

Japan Times & Advertiser

WAR IS ON!

JAPAN'S NAVY PLANES ATTACK HAWAII, SINGAPORE, DAYAO, WAKE, GUAM ISLES.



Fear Spreads Across the Western United States & Canada

• Mandatory nighttime blackouts are instituted in Hawaii and California to deceive Japanese pilots if they attempt to attack the United States' mainland.

URGENT WARNING URGENT

BLACKOUT COMPLETELY

"OUTBLACK THE LAST BLACKOUT"

ALBANY	ALBUQUERQUE	ALBUQUERQUE	ALBUQUERQUE
ALBUQUERQUE	ALBUQUERQUE	ALBUQUERQUE	ALBUQUERQUE
ALBUQUERQUE	ALBUQUERQUE	ALBUQUERQUE	ALBUQUERQUE
ALBUQUERQUE	ALBUQUERQUE	ALBUQUERQUE	ALBUQUERQUE

NAINGET PAKAUNA NAINGET

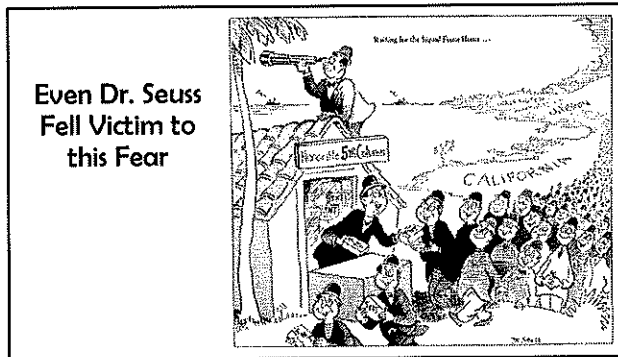
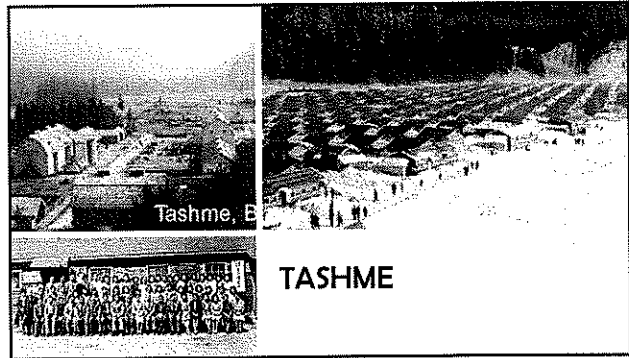
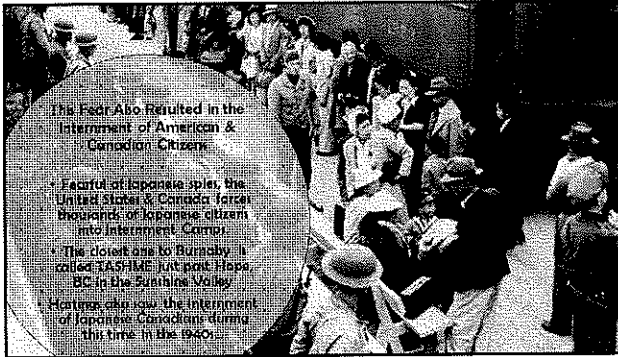
WESTERN DEFENSE COMMAND AND FOURTH ARMY
WARTIME CIVIL CONTROL ADMINISTRATION
Office of San Francisco, California
April 5, 1942

INSTRUCTIONS TO ALL PERSONS OF JAPANESE ANCESTRY
Living in the following Area:

NOTICE

Headquarters Western Defense and Fourth Army
Office of San Francisco
April 5, 1942

Civilian Exclusion



Event 3: Significance/Results


- Japanese catch the US completely by surprise
- Japanese severely weakened but do not destroy the US Pacific Fleet
- The USA enters WWII...1941

Event 4: Spring 1942

- Japan takes over Thailand, Burma, Malaya, Philippines, and Dutch East Indies

The Bataan Death March

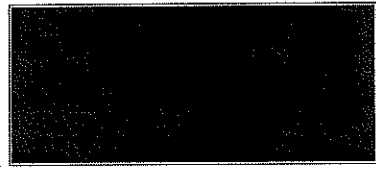


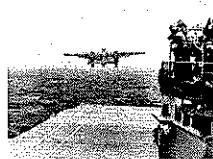
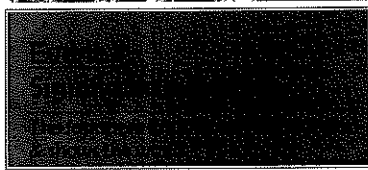

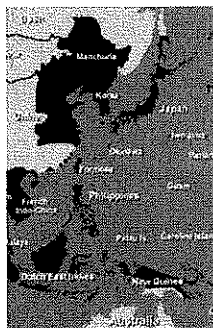
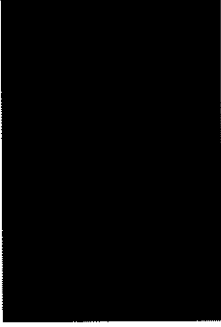


- After taking the Philippines, the Japanese army forced 76,000 American and Filipino soldiers to march 60 miles to a Prisoner of War (POW) camp



The Tribune

BATAAN COMPLETELY OCCUPIED BY JAPANESE

Japanese Forces Take Cebu



The Doolittle Attack Plan- April 1942

Event 5: Significance/Result

- The Raid is military insignificant but psychologically important because it shows that the US is capable of striking the Japanese mainland.
- It demonstrated that the Japanese mainland was vulnerable to American air attack, served as retaliation for the Japanese attack on Pearl Harbour.
- After the raid, the Imperial Japanese Army conducted a massive sweep through the eastern coastal provinces of China, in an operation now known as the Zhejiang-Jiangxi campaign, searching for the surviving American airmen and inflicting retribution on the Chinese who aided them, in an effort to prevent this part of China from being used again for an attack on Japan.
- China pays a heavy price (250,000 dead) for helping US pilots who bailed out over China after dropping their bombs on Tokyo.

Lt. Col. Doolittle with members of his flight crew and Chinese officials in China after the attack

Event 6: June 4, 1942

The Battle of Midway

A Break for the Americans

- By the middle of 1942, the US had already cracked the Japanese codes
- This allowed the US to set a trap for the Japanese fleet.

A Disaster for Japan

- The Americans surprise the Japanese fleet
- Japan loses four of six heavy aircraft carriers among many other ships

B-25 Mitchell skip-bombs a Japanese Kailboka escort ship, 1945

BATTLE OF MIDWAY

Turning the Tide in the Pacific!